

VENICE, FLORIDA

AL-5960 (FAA)

RNAV (GPS) RWY 31

VENICE MUNI (VNC)

APP CRS 317°	Rwy Idg 4999
	TDZE 16
	Apt Elev 18

▽ When local altimeter setting not received, use Sarasota altimeter setting and increase all MDA 60 feet; Increase LNAV Cat C and D visibility ¼ mile. Inoperative table does not apply. DME/DME RNP-0.3 NA. Visibility reduction by helicopters NA.

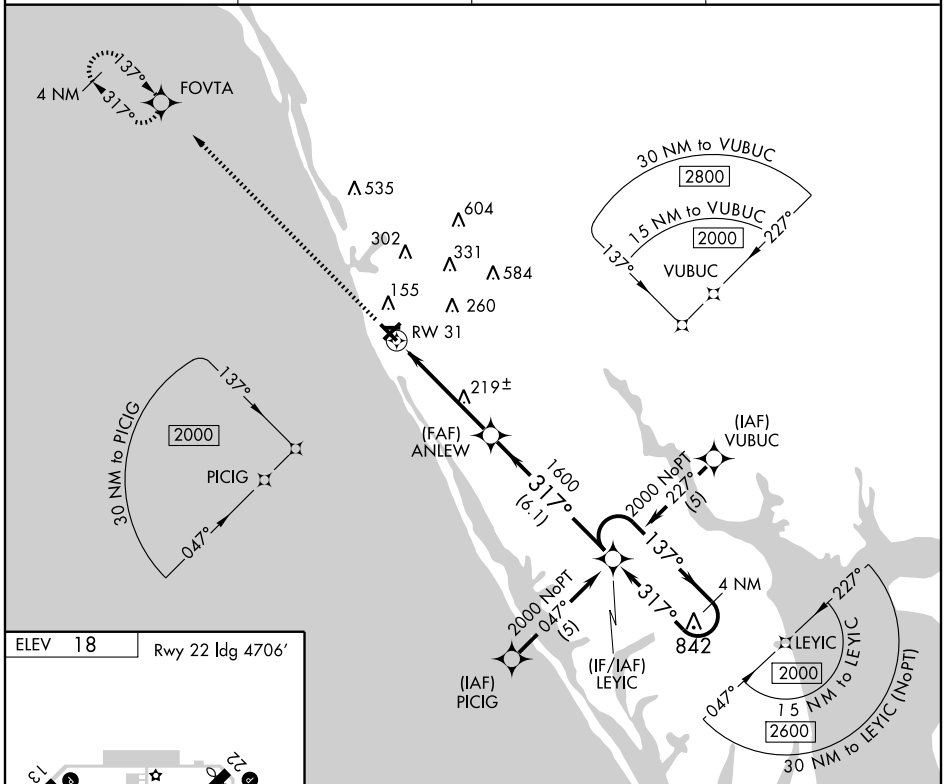
ODALS MISSED APPROACH: Climb to 2000 direct FOVTA and hold.

AWOS-1
119.275

TAMPA APP CON
119.65 353.575

CLNC DEL
118.075

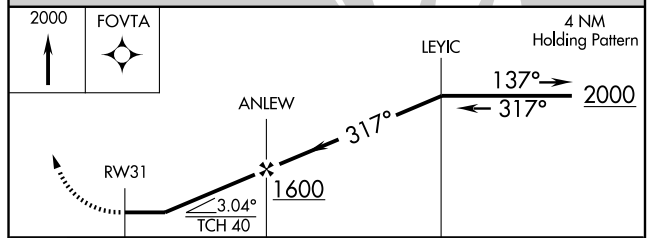
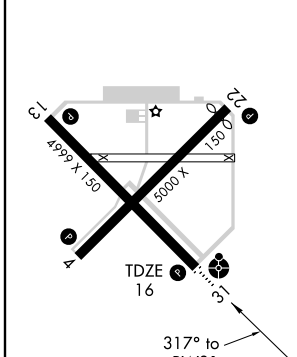
UNICOM
122.725 (CTAF) 1



SE-3, 01 JUL 2010 to 29 JUL 2010

SE-3, 01 JUL 2010 to 29 JUL 2010

ELEV 18 Rwy 22 Idg 4706'



MIRL Rwy 4-22 and 13-31 **1**
REIL Rwy 4, 22, 13 and 31 **1**

CATEGORY	A	B	C	D
LNAV MDA	480-1	464 (500-1)	480-1¼ 464 (500-1¼)	480-1½ 464 (500-1½)
CIRCLING	500-1	482 (500-1)	500-1½ 482 (500-1½)	600-2 582 (600-2)

VENICE, FLORIDA
Orig 08269

27°04'N-82°26'W

RNAV (GPS) RWY 31