

VENICE, FLORIDA

AL-5960 (FAA)

RNAV (GPS) RWY 13

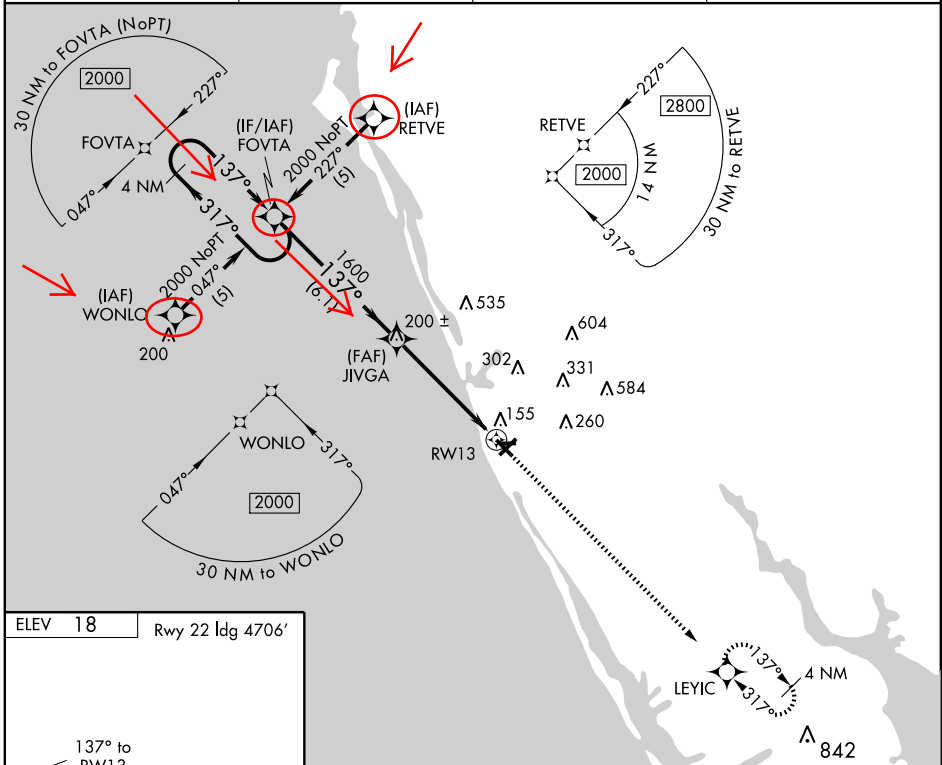
VENICE MUNI (VNC)

APP CRS 137°	Rwy ldg 4999
	TDZE 16
	Apt Elev 18

NA When local altimeter setting not received, use Sarasota altimeter setting and increase all MDA 60 feet; Increase LNAV Cat. C visibility ¼ mile. DME/DME RNP-0.3 NA. Visibility reduction by helicopters NA. VDP NA when using Sarasota altimeter setting.

MISSED APPROACH: Climb to 2000 direct LEYIC and hold.

AWOS-1 119.275	TAMPA APP CON 119.65 353.575	CLNC DEL 118.075	UNICOM 122.725 (CTAF)
---------------------------------	---	-----------------------------------	--



SE-3, 01 JUL 2010 to 29 JUL 2010

SE-3, 01 JUL 2010 to 29 JUL 2010

ELEV 18	Rwy 22 ldg 4706'
---------	------------------

Diagram showing RWY 13 and RWY 22. RWY 13 is 5000' x 150'. TDZE is 16. RWY 22 is 2200' x 150'. A 137° heading is indicated for RWY 13.

MIRL Rwy 4-22 and 13-31
REIL Rwy 4, 22, 13 and 31

4 NM Holding Pattern	FOVTA	2000	LEYIC	
2000 ← 317° →		137°		
1600		137°		
6.1 NM		3.5 NM	1.3	
JIVGA		1.3 NM to RWY 13		
3.04° TCH 46				
CATEGORY	A	B	C	D
LNAV MDA	460-1	444 (500-1)	460-1¼ 444 (500-1¼)	460-1½ 444 (500-1½)
CIRCLING	500-1	482 (500-1)	500-1½ 482 (500-1½)	600-2 582 (600-2)

VENICE, FLORIDA
Orig 08269

27° 04' N - 82° 26' W

RNAV (GPS) RWY 13

VENICE MUNI (VNC)